

## FOR LEASE: INDUSTRIAL SPACE



### FEATURES

- LAYOUT:  
FORMER KARATE  
CENTER WITH OFFICE  
AND RESTROOM.
- SPRINKLERS: FULLY
- LOCATION:  
SOUTH OF REDFIELD  
ROAD, EAST OF  
SCOTTSDALE ROAD
- ZONING:  
CITY OF SCOTTSDALE I-1

### Available:

Suite(s) A1 +/-2,246 sf

### Lease Rate:

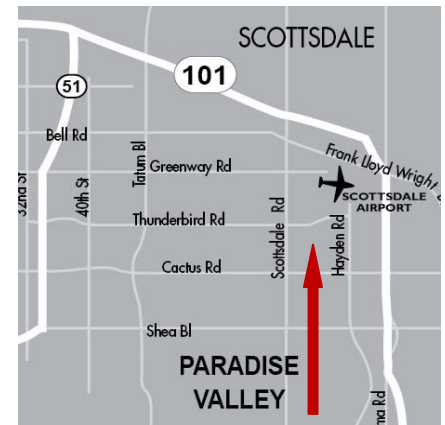
\$0.80/sf  
Industrial Gross

*To see our other properties  
follow this link*

<http://www.screaz.com/>

## Gray Road Center

7641 E. Gray Road  
Scottsdale, AZ 85260



### CONTACT:

**ERIC SCHAEFER**  
eric@screaz.com

Cell: (602) 525-0713

**7621 E. Gray Rd., Suite D**  
**Scottsdale, AZ 85260**

**Office: 480.998.5025**

**Fax: 480.951.2493**

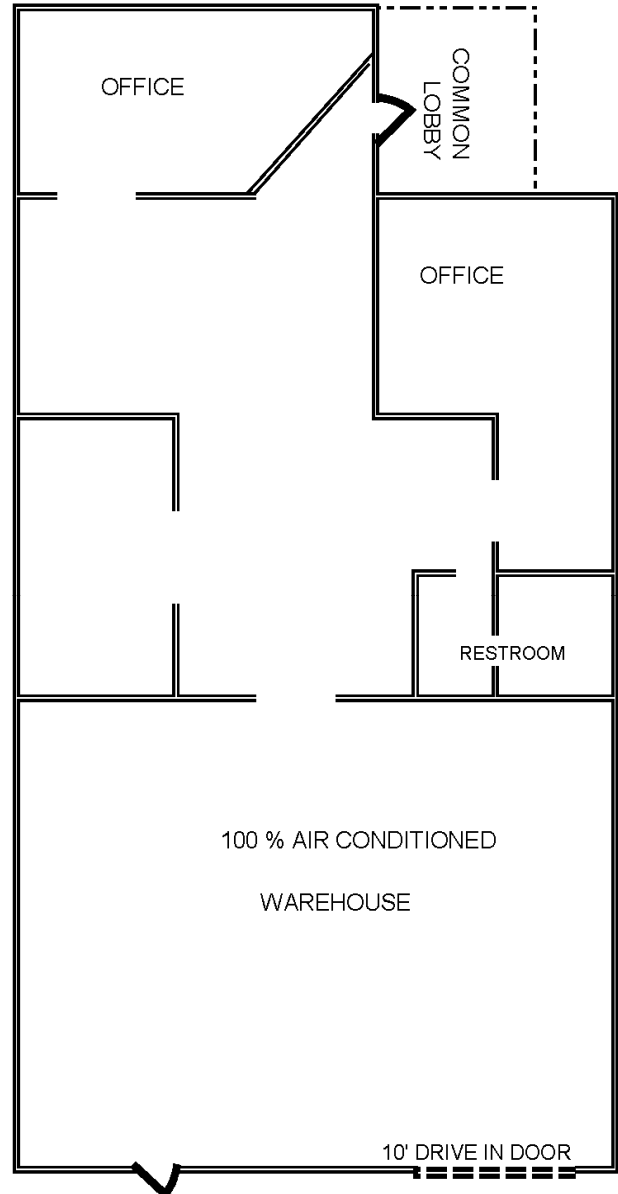
## FOR LEASE: INDUSTRIAL SPACE FLOOR PLAN



**7641 E. Gray Road**  
**Scottsdale, AZ 85260**

**Suite(s)**  
**A1**

**Size**  
**+/- 2,246 sf**



**CONTACT:**

**ERIC SCHAEFER**  
eric@screaz.com

Cell: (602) 525-0713

**7621 E. Gray Rd., Suite D**  
**Scottsdale, AZ 85260**

**Office: 480.998.5025**

**Fax: 480.951.2493**