

## FOR LEASE: OFFICE SPACE



### Thomas Road Center

2627 E. Thomas Road  
Phoenix, AZ 85016

#### FEATURES

- LAYOUT:  
100% OFFICE SPACE.
- PREVIOUSLY CALL CENTER
- LOCATION:  
CENTRAL PHOENIX EAST  
OF 24<sup>TH</sup> STREET
- ZONING:  
CITY OF PHOENIX R-5

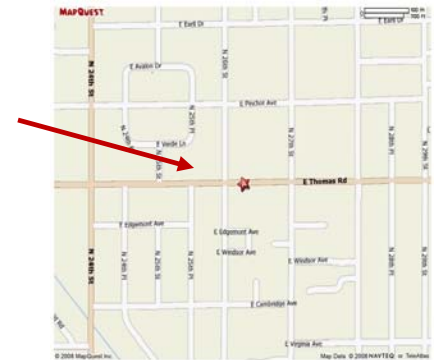
#### Available:

Building +/-9,650 sf  
100 % office

#### Lease Rate:

\$3,500/mo  
IG

*To see our other  
properties follow this link*  
<http://www.screaz.com/>



All rights reserved. Use subject to License/Copyright Map Legend  
Directions and maps are informational only. We make no warranties on the accuracy of our content, road conditions or  
route suitability or any other information. You assume all risk of use. MapQuest and its suppliers shall not be liable to you for  
any loss or delay resulting from your use of MapQuest. Your use of MapQuest means you agree to our [Terms of Use](#)

CONTACT:

**ERIC SCHAEFER**  
eric@screaz.com

Cell (602) 525-0713

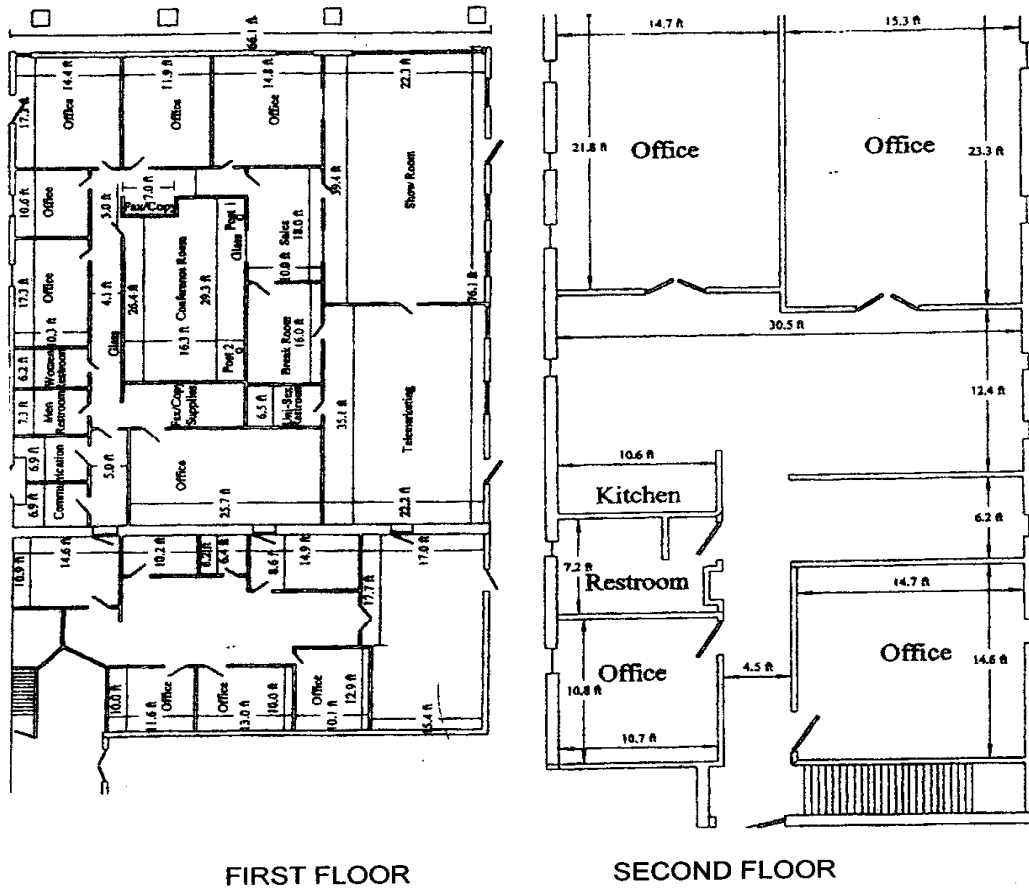
7621 E. Gray Rd., Suite D  
Scottsdale, AZ 85260

Office: 480.998.5025  
Fax: 480.951.2493

**FOR LEASE: OFFICE SPACE FLOOR PLAN**

2627 E. Thomas Road, Phoenix, AZ 85016

Size +/- 9,650 s.f.



CONTACT:

**ERIC SCHAEFER**  
 eric@screaz.com  
 Cell (602) 525.0713

7621 E. Gray Rd., Suite D  
 Scottsdale, AZ 85260

Office: 480.998.5025  
 Fax: 480.951.2493